



Fund Profile

Cardano Impact Equity Global invests in shares of globally listed companies. The objective is to at least match the return of the benchmark using an active investment strategy, and taking into account the Cardano Sustainable Investment Policy. The fund has a sustainable investment objective as referred to in Article 9 of the SFDR, pursuing one or more long-term Cardano Sustainability Objectives. Investments for this fund are only made in companies categorized as 'positive impact' based on the Cardano Sustainable Investment Policy. For this fund, investments are made in companies with a demonstrable contribution to the Sustainable Development Goals as agreed by the United Nations. All companies in the investment universe are assigned an ESG score, with the fund portfolio striving for the highest possible ESG score. Currency risk is not hedged.

Key Information

**ISIN Code:** NL0010579124

**Type of Fund:** Equity

**Currency:** EUR

**Stock Exchange Listing:** Euronext Amsterdam

**Trading Frequency:** Daily

**Fund Manager:** Cardano Asset Management N.V.

**Investment Institution:** Cardano Investment Funds I

**Country of Residence:** The Netherlands

**Inception Date Fund:** 22/02/2018

**Inception Date Participation Class:** 01/02/2023

**Benchmark:** MSCI All Country World Index Net EUR

Fund Facts

**NAV End of Month:** €49.92

**Fund Size:** €122,694,963

**Outstanding Participations:** 2,457,760

**Dividend Paying:** Yes

**Holdings in Portfolio:** 76

**Price End of Month:** €49.95

**Lowest Price 12 Months:** €40.78

**Highest Price 12 Months:** €49.98

Fees & Charges

**Management Fee:** 0.600%

**Service Fee:** -

**Performance Fee:** -

**Entry Fee:** 0.050%

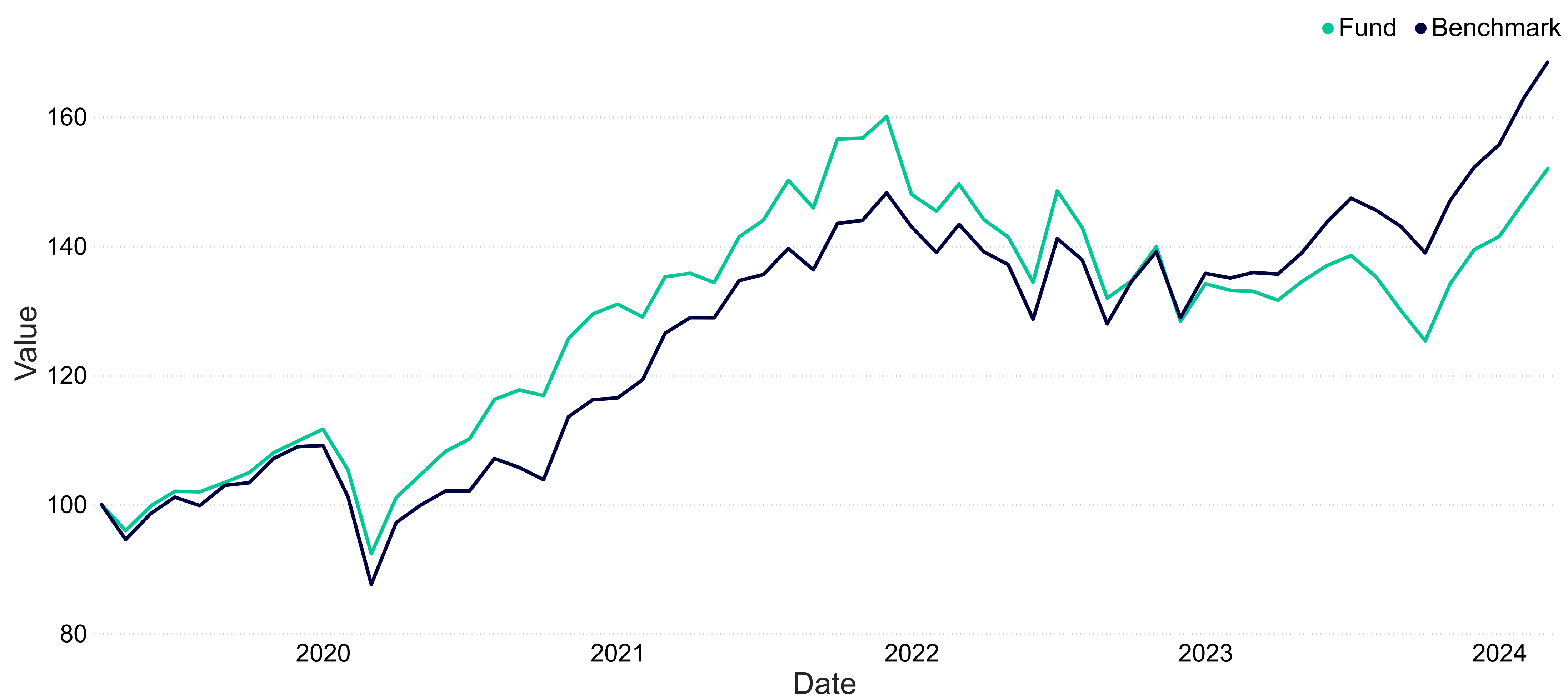
**Exit Fee:** 0.050%

**Ongoing Charges:** 0.600%

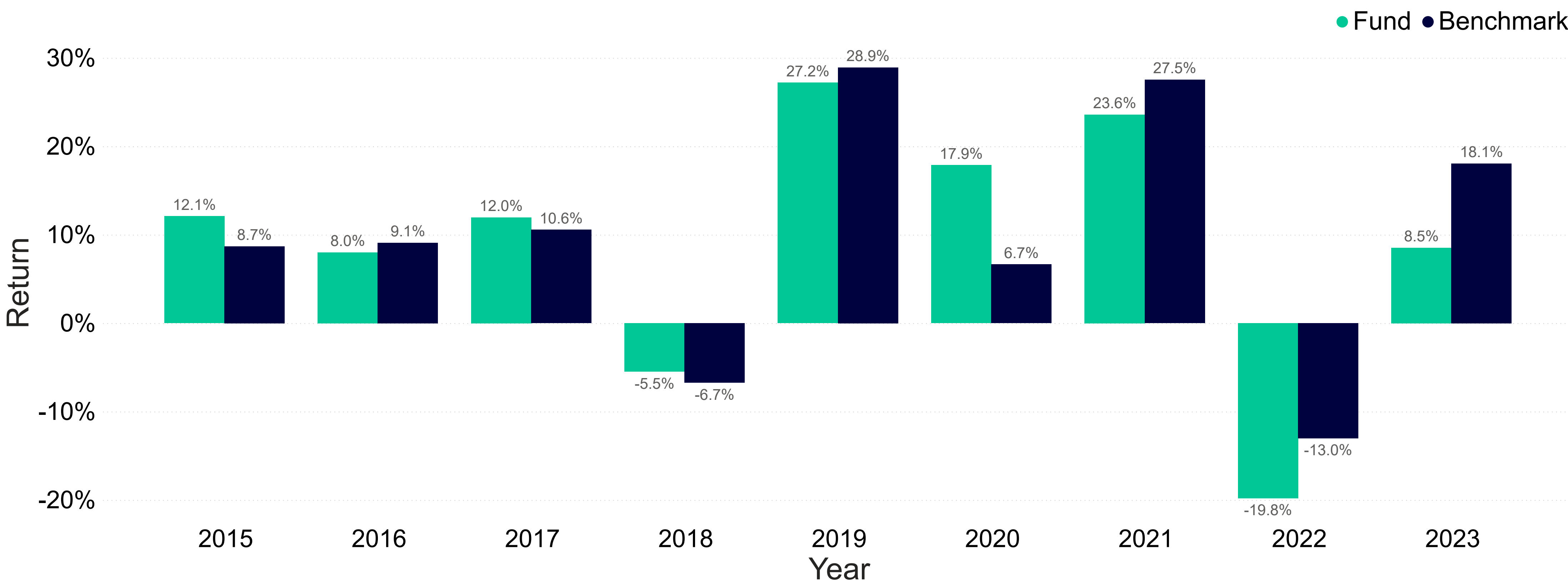
Sustainability

**SFDR Classification:** Art. 9

Cumulative Performance (Net of Fees)



Calendar Year Return (Net of Fees)



Returns (Net of Fees)

	Portfolio	Benchmark	Excess Return
Month-to-date	3.39%	3.35%	0.04%
Year-to-date	8.95%	10.67%	-1.71%
3 Months Rolling	8.95%	10.67%	-1.71%
12 Months Rolling	14.11%	23.95%	-9.84%
3 Year Annualised	3.92%	10.01%	-6.09%
5 Year Annualised	9.12%	11.78%	-2.66%
Since Inception	9.75%	10.70%	-0.95%

Morningstar

**Morningstar Rating:** ★★ ★

**Morningstar Category:** EAA Fund Global Large-Cap Blend Equity

**Morningstar Peer Group Ranking:** 94

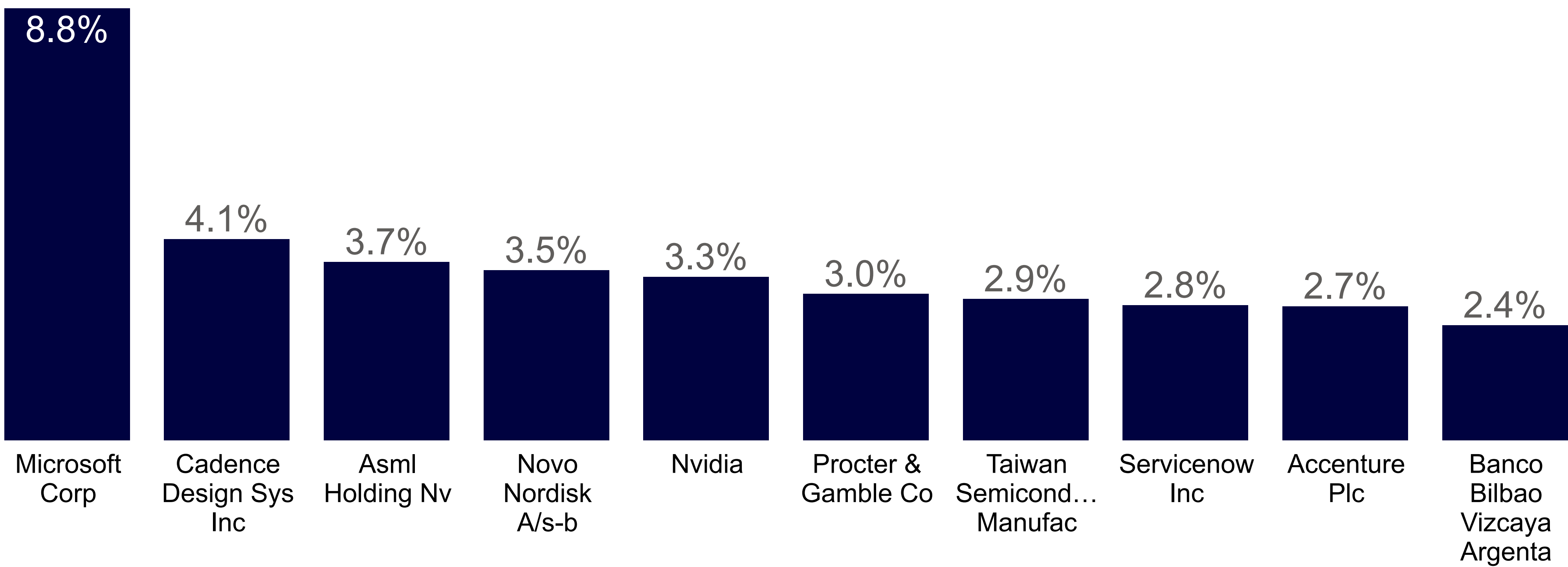


Factsheet as of end of March 2024

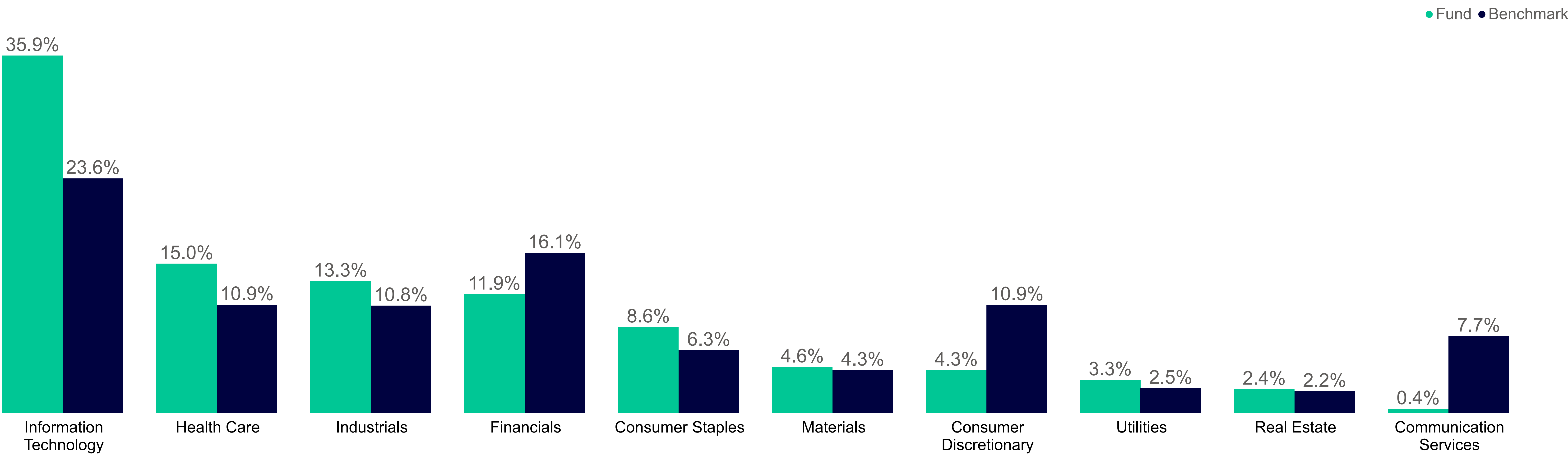
Risk Characteristics

	Portfolio	Benchmark
Standard Deviation 36M	14.91%	13.31%
Sharpe Ratio 36M	0.17	0.62
Tracking Error Ex Ante	4.63%	
Active Share	86.18%	

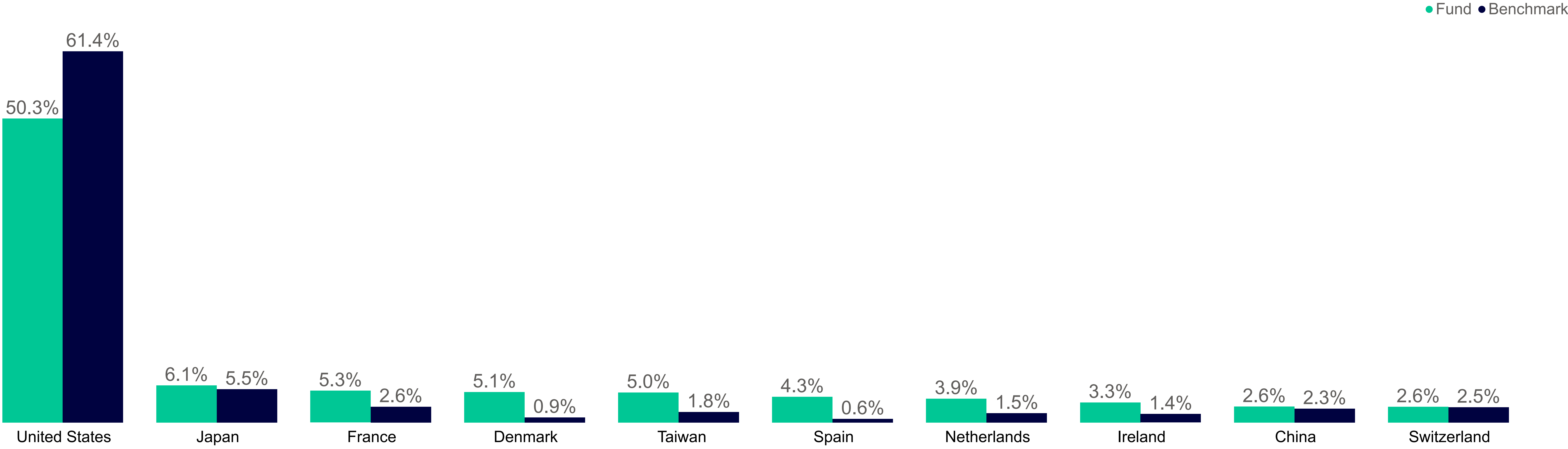
Top Holdings by Weight



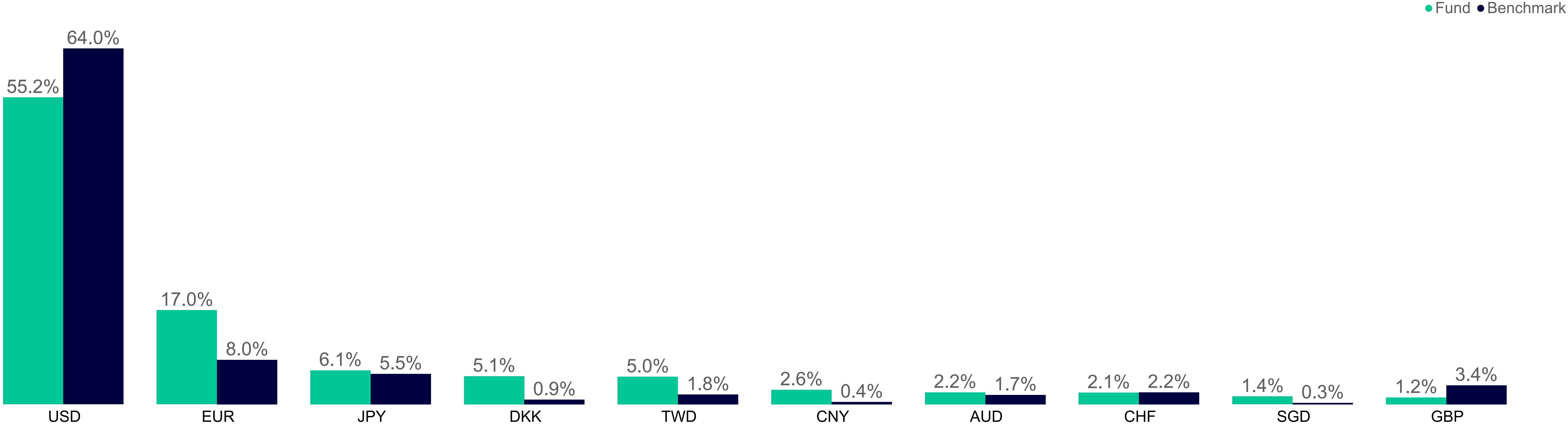
Sector Allocation (Top by Weight)



Country Allocation (Top by Weight)



Currency Allocation (Top by Weight)



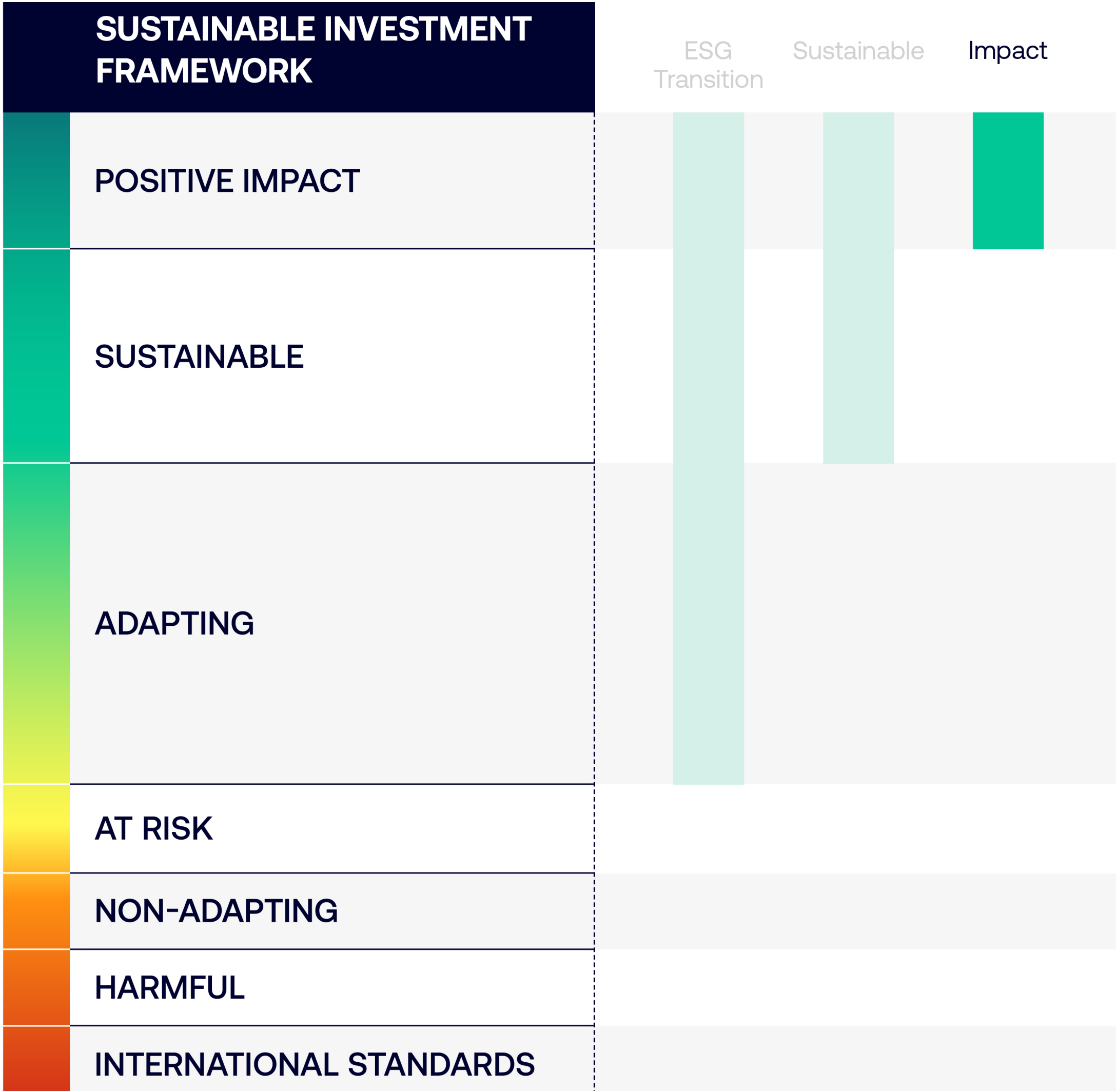
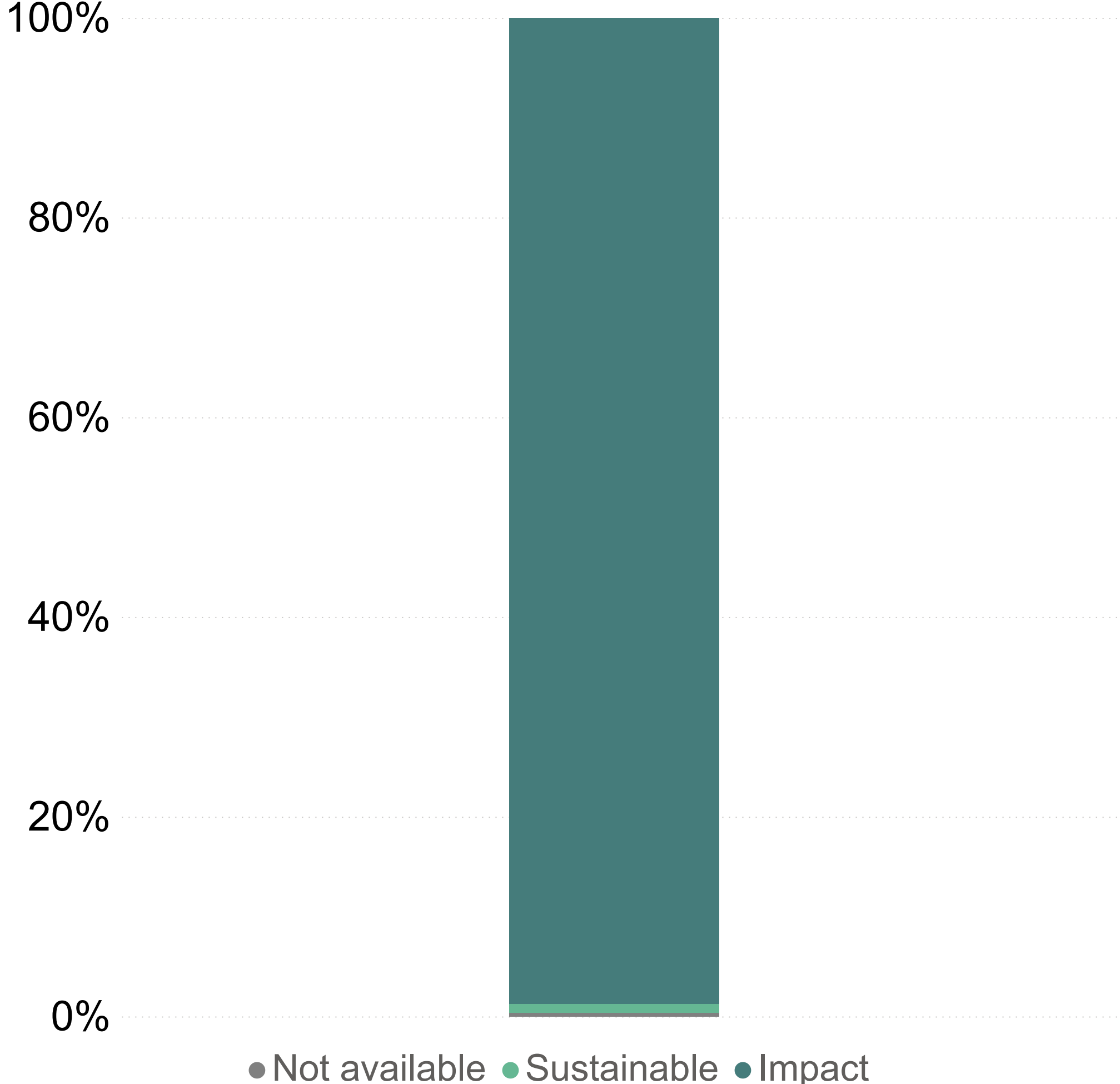
## ESG Score: 77 out of 100

### Distribution of Issuers

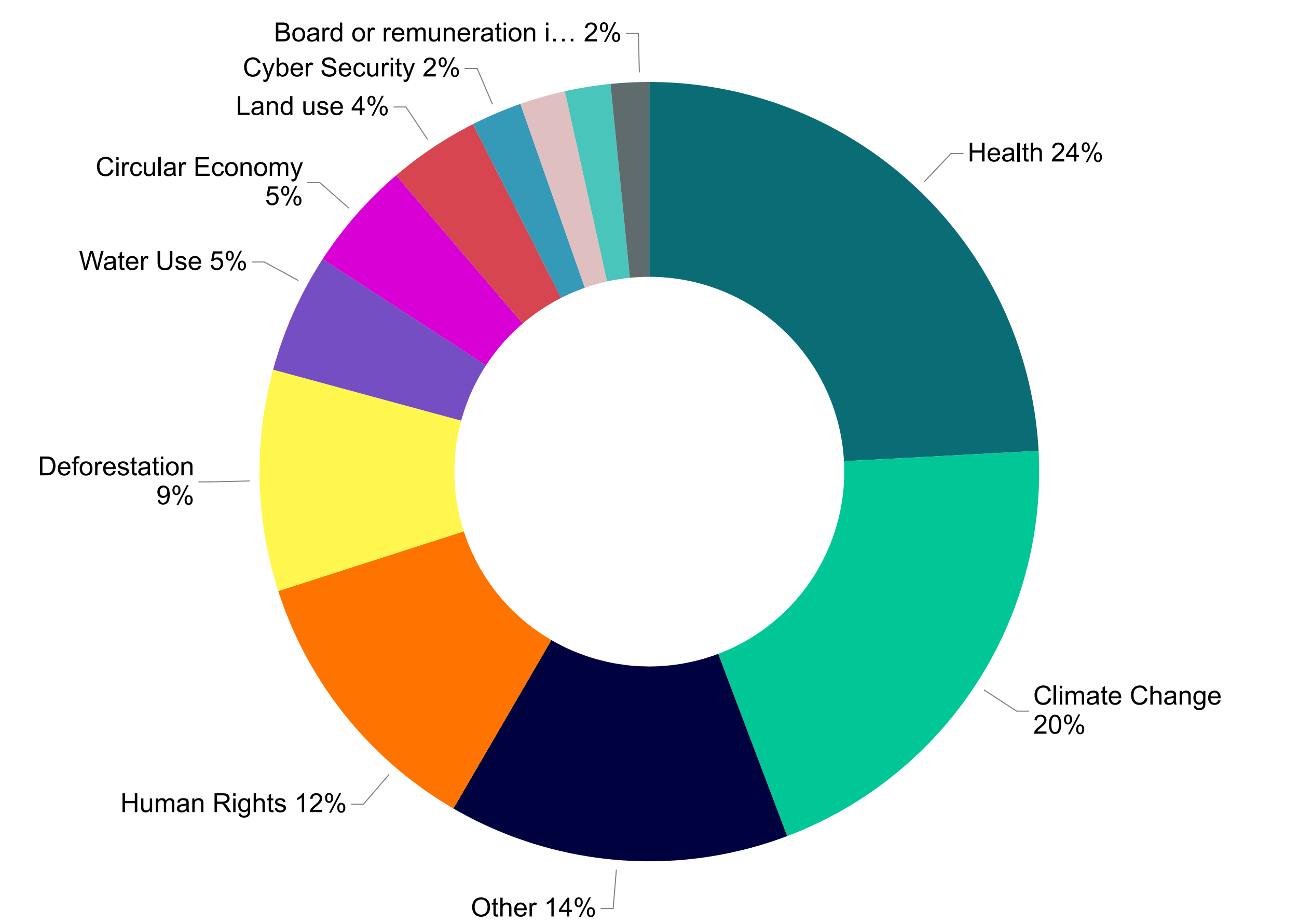


## Sustainable Investment Framework

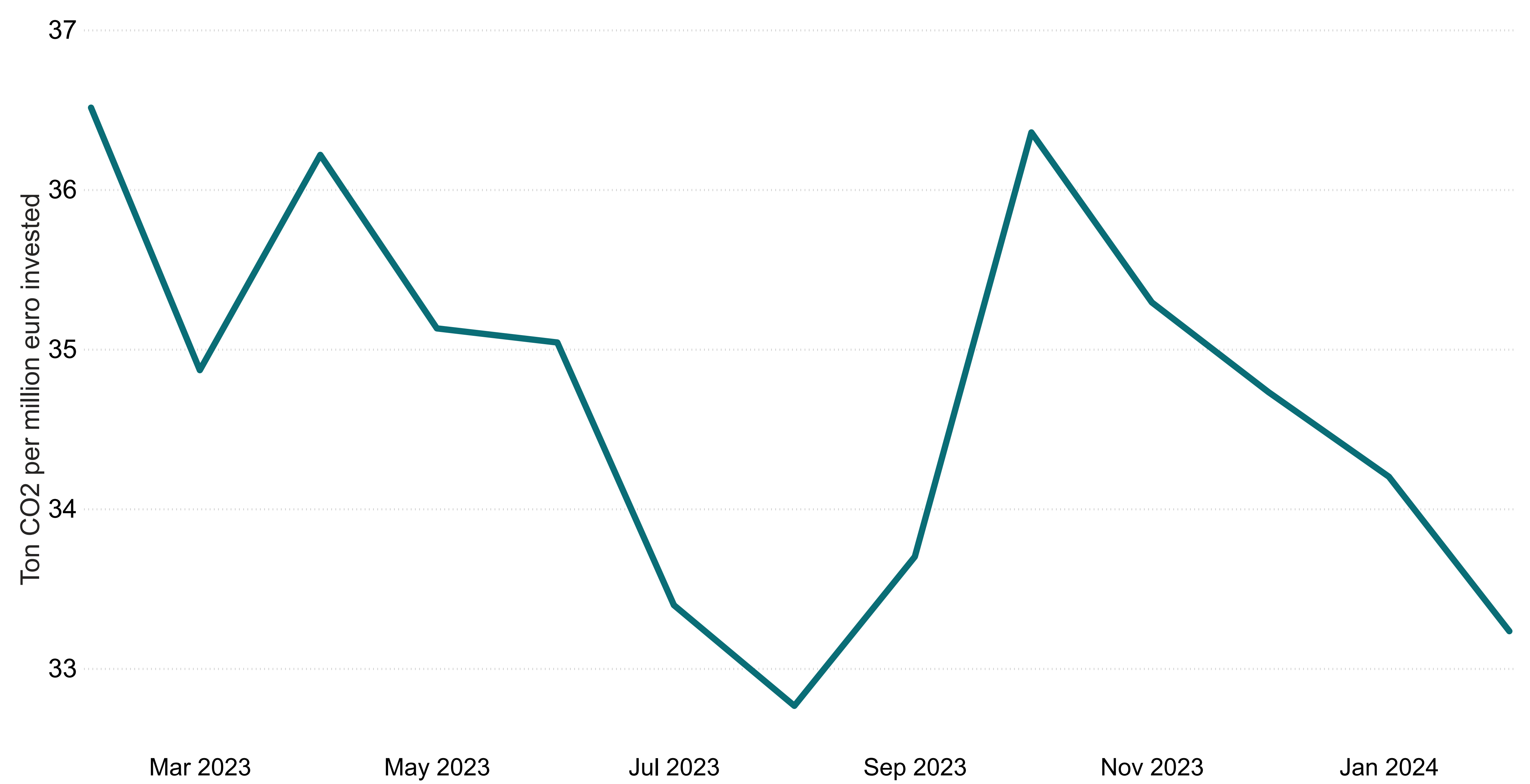
### Portfolio Weighting by Category



## Engagement Topics



## Carbon Footprint (Scope 1 and 2)



## Engagement Metrics

New Engagements (Last 6 Months): -

Open Engagements: 19

Closed Successful Engagements: 29

Closed Unsuccessful Engagements: 0